

# PARRAMATTA ECONOMIC ASSESSMENT

Prepared for: JQZ  
July 2024

This report is dated **July 2024** and incorporates information and events up to that date only and excludes any information arising, or event occurring, after that date which may affect the validity of Urbis Ltd's (Urbis) opinion in this report. Urbis prepared this report on the instructions, and for the benefit only, of **JQZ** (Instructing Party) for the purpose of a **Parramatta Economic Assessment** (Purpose) and not for any other purpose or use. Urbis expressly disclaims any liability to the Instructing Party who relies or purports to rely on this report for any purpose other than the Purpose and to any party other than the Instructing Party who relies or purports to rely on this report for any purpose whatsoever (including the Purpose).

In preparing this report, Urbis was required to make judgements which may be affected by unforeseen future events including wars, civil unrest, economic disruption, financial market disruption, business cycles, industrial disputes, labour difficulties, political action and changes of government or law, the likelihood and effects of which are not capable of precise assessment.

All surveys, forecasts, projections and recommendations contained in or made in relation to or associated with this report are made in good faith and on the basis of information supplied to Urbis at the date of this report. Achievement of the projections and budgets set out in this report will depend, among other things, on the actions of others over which Urbis has no control.

**Urbis acknowledges the important contribution that Aboriginal and Torres Strait Islander people make in creating a strong and vibrant Australian society.**

**We acknowledge, in each of our offices, the Traditional Owners on whose land we stand.**

Urbis has made all reasonable inquiries that it believes is necessary in preparing this report but it cannot be certain that all information material to the preparation of this report has been provided to it as there may be information that is not publicly available at the time of its inquiry.

In preparing this report, Urbis may rely on or refer to documents in a language other than English which Urbis will procure the translation of into English. Urbis is not responsible for the accuracy or completeness of such translations and to the extent that the inaccurate or incomplete translation of any document results in any statement or opinion made in this report being inaccurate or incomplete, Urbis expressly disclaims any liability for that inaccuracy or incompleteness.

This report has been prepared with due care and diligence by Urbis and the statements and opinions given by Urbis in this report are given in good faith and in the belief on reasonable grounds that such statements and opinions are correct and not misleading bearing in mind the necessary limitations noted in the previous paragraphs. Further, no responsibility is accepted by Urbis or any of its officers or employees for any errors, including errors in data which is either supplied by the Instructing Party, supplied by a third party to Urbis, or which Urbis is required to estimate, or omissions howsoever arising in the preparation of this report, provided that this will not absolve Urbis from liability arising from an opinion expressed recklessly or in bad faith.

**Urbis staff responsible for this report were:**

Director	Alex Stuart
Senior Consultant	Jennifer Williams
Consultant	Peter Youssef
Project code	P0046076
Report number	Final Report

# CONTENTS

1. Executive Summary	4
2. Site Overview	6
3. Commercial Office	9
3.1 Office Supply Analysis	11
3.2 Office Demand and Vacancy	14
3.3 Office Rents and Incentives	19
3.4 Commercial Office Recommendations	21
4. Residential	23
4.1 Residential Supply Analysis	27
4.2 Residential Needs Assessment	32



# 01



## EXECUTIVE SUMMARY

# EXECUTIVE SUMMARY

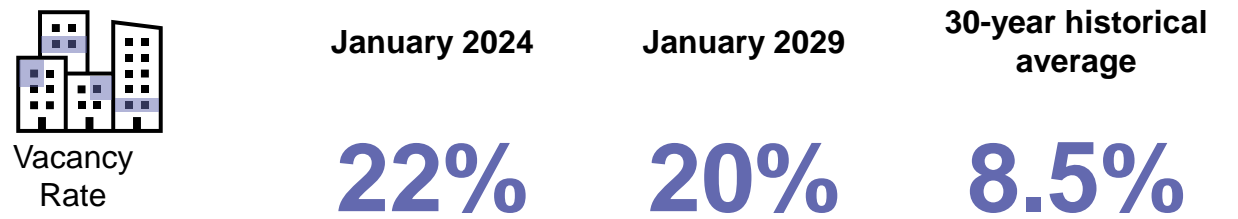
## Key Findings

The Subject Site is a mixed-use residential, office and retail development located at 83 Church Street, Parramatta. It is located on the border of the Parramatta Office Market as defined by the Property Council of Australia (PCA). Being located outside of the Mid City of Parramatta in a building located within a largely retail and residential location, the office space (under expected market conditions) is unlikely to be able to be leased over the short to medium term. While some office leasing activity is likely to occur in Parramatta, this will primarily be moderate and in more prominent office locations, which are currently being discounted in an attempt to lure tenants from less well-positioned locations and from lower-grade stock. Vacancy is expected to remain at or above 20% over the five-year outlook in the Office Study Area, well above the long-term average. This is despite most of the planned pure office supply being pushed out beyond 2030. Urbis forecasts the achievable net effective rent in the Office Study Area to range between \$354/sq.m and \$412/sq.m and face rents range from \$624/sq.m to \$635/sq.m from 2024 to 2030. This is significantly below the pre-commitment rents that have been achieved, which has resulted in office space being able to commence and commercial development being viable for their owners. Due to current and forecast office market conditions, commercial development at the Subject Site will likely be economically unfeasible over the short to medium-term; thus, alternative land uses should be explored. Residential is likely to represent the highest and best use for the Subject Site, with the Apartment needs assessment compared to apartment supply showing a large gap. This is compounded by State Government dwelling targets compared to expected dwelling supply showing more housing is going to be needed in the City of Parramatta over the short to medium term.

## Parramatta Commercial Office Market Rents, ranges achievable from 2024 - 2030

Forecast Prime Net Effective Rent (\$/sq.m)	\$354 - \$412
Forecast Prime Net Face Rent (\$/sq.m)	\$624 - \$635

Source: Urbis Office Model



Source: PCA, Cordell Connect, Cityscope, Developer websites, Urbis Office Model

## Current State of the Parramatta Residential Market – Against Targets



Source: Planning NSW; UDP; Urbis



An aerial night-time photograph of a modern high-rise building. The building features a distinctive stepped design with multiple balconies, many of which are illuminated from within, creating a warm glow. The building is surrounded by other urban structures, including a parking lot to the left and a road with light trails to the right. The overall scene is set against a dark night sky.

# 02

## SITE OVERVIEW





# SITE AND DEVELOPMENT OVERVIEW

## Key Findings

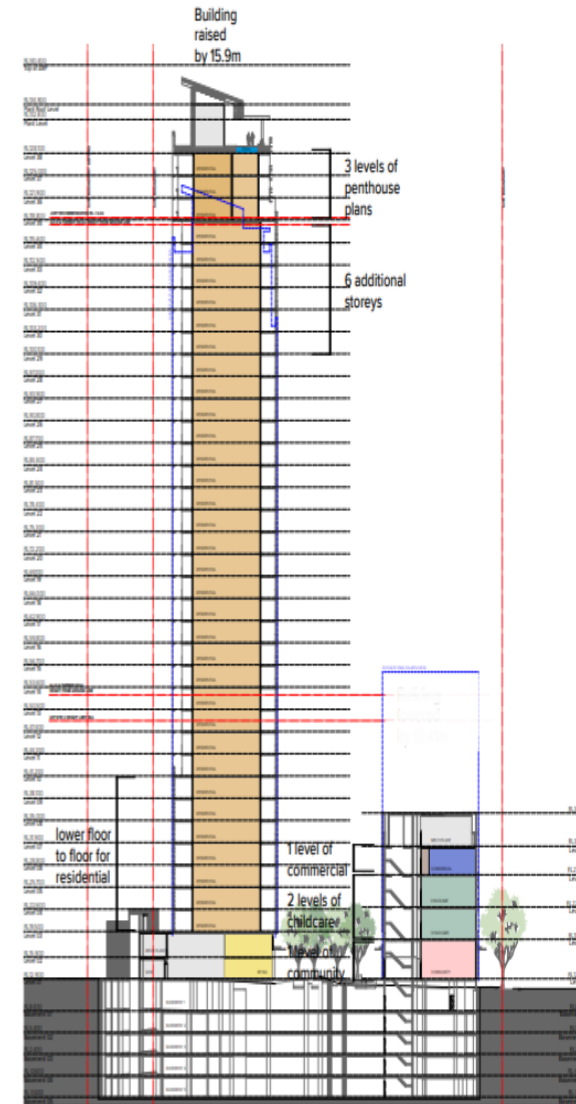
The consent for the original Development Application (DA) was granted for a mixed-use development across two sites, including the development of a hotel containing 275 rooms and two residential towers containing 542 apartments over two levels of retail and commercial podium at Site 1. Additionally, Site 2 includes the construction of a non-residential building and a mixed-use tower containing 9 levels of non-residential floor space and 22 storeys comprising 235 apartments.

The proposed shift from commercial to residential GFA at the Subject Site only relates to Site 2.

The new Planning Proposal for the Subject Site consists of:

- DA-approved total GFA of 34,901 sq.m
- An increase of 148 apartments to a total of 383 residential apartments, offering a mix of 138 one-bedroom units, 166 two-bedroom units and 79 three-bedroom units.
- 13,625 sq.m GFA converted from office to residential
- Community and retail Use at Level 1
- Childcare at Levels 2 and 3
- Commercial at Level 4.

## Planning Proposal Scheme



Source: JQZ; Turner





03

# COMMERCIAL OFFICE



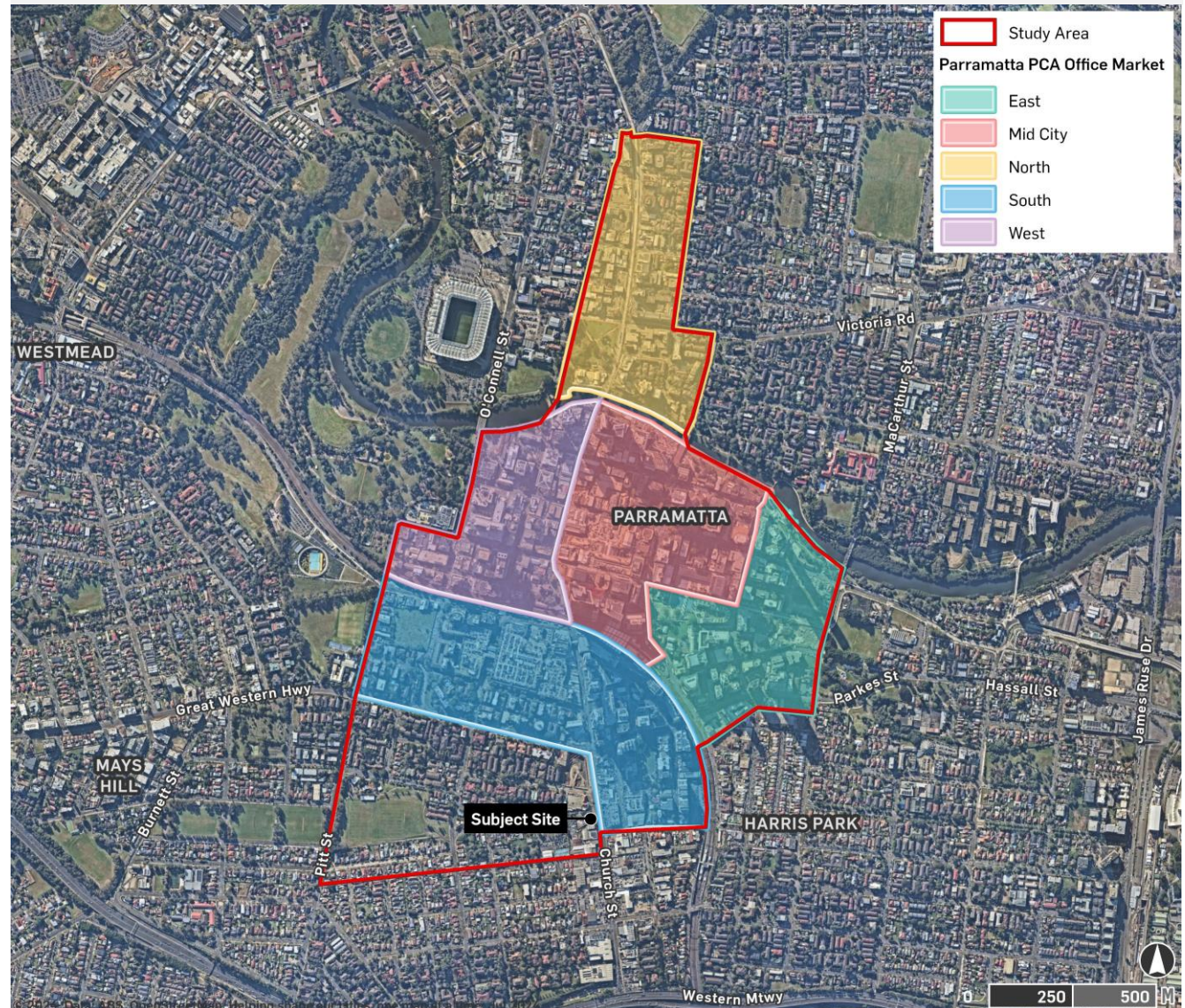
# COMMERCIAL OFFICE STUDY AREA

## Key Findings


The proposed development at the Subject Site is located within the 'Fringe' of the Parramatta Office Market and beyond the office boundaries defined by the PCA shown on the map adjacent.

For the purpose of this analysis, Urbis have considered the PCA office market plus the additional area to the South of the CBD, which incorporates the Subject Site, as the Office Study Area. This Study Area was chosen as the Subject Site will compete directly with any office space located within this area.

## Commercial Office Study Area







3.1

# OFFICE SUPPLY ANALYSIS

# HISTORICAL STOCK AND SUPPLY AND OUTLOOK

## Key Findings

The table adjacent outlines the historical and forecast stock, supply and withdrawals within the Parramatta commercial office market between January 2019 and January 2029.

According to the PCA Office Market Report (January 2024), and an examination of the additional area outside of the PCA office market area, the Study Area had ~719,500 sq.m of net lettable commercial floorspace (NLA) in January 2019. The market has been significantly increasing stock size since 2019 at 5% per annum, with approximately 243,840 sq.m developed (with moderate withdrawals) to January 2024.

Since 2005, the rapid rise in population in the Parramatta area has resulted in increased demand from the local population servicing office tenants, in particular from professional services firms. This has been combined with increased investment in the area and supply of A-grade office stock, which is attracting business and professional services firms as well as financial and insurance services firms to the area. This assisted in filling some of the net 243,839 sq.m of office space added to the market over the five years to January 2024.

Over the next five years, commercial stock is forecast to increase by more than 63,630 sq.m of NLA. Also consistent with the past five years, there is unlikely to be a moderate rate of withdrawal in the Study Area to January 2029. This is indicative of a market that is in oversupply. The excess supply is due to the completion of several office developments throughout the pandemic and a slowing of tenant demand.

## Historical and Projected Stock and Supply, Jan 2019 – Jan 2029

	Stock (sq.m)	Gross New Supply (sq.m)	Withdrawals (sq.m)	Net New Supply (sq.m)
Jan-19	719,547	26,920	12,789	14,131
Jan-20	768,421	62,174	13,300	48,874
Jan-21	809,526	44,363	3,258	41,105
Jan-22	887,268	126,222	48,480	77,742
Jan-23	959,818	74,800	2,250	72,550
Jan-24	963,386	21,964	18,396	3,568
Jan-25	993,298	29,912	0	29,912
Jan-26	1,028,298	35,000	0	35,000
Jan-27	1,019,554	0	8,744	-8,744
Jan-28	1,025,819	6,265	0	6,265
Jan-29	1,027,019	10,000	8,800	1,200

Source: PCA, Cordell Connect, Cityscope, Developer websites, Urbis Office Model



# SUPPLY OUTLOOK BREAKDOWN

## Key Findings

In addition to the 963,386 sq.m of existing commercial floorspace, the Office Study Area has proposed commercial developments that are anticipated to deliver more than 236,600 sq.m of commercial floorspace by 2031. The majority of proposed developments in the Study Area are located in the Mid-City sub locale of the Parramatta PCA Office Market, which has greater access to public transport and retail amenities than the other sub-locals. Many of these projects have developer completion dates earlier than indicated in the table. However, as most office developments are currently not feasible and are unlikely to receive precommitments, all the pure office buildings that have not commenced have been pushed out along the development timeframe. The rising construction costs, in conjunction with low effective rents, have led to very few economically feasible projects.

The notable developments include:

- **197 Church Street** is a mixed-use development currently under construction that comprises a hotel, retail space and commercial office. The 25-storey commercial office is estimated to deliver 35,000 sq.m of office floor space by 2025.
- **110 George Street (The Octagon)** is a mixed-use development currently in the development approval stage that comprises a hotel and commercial office space. The commercial office development is estimated to deliver 53,000 sq.m of commercial floor space by 2027 according to the developer. Urbis have factored in an expected completion of 2031 due to the expected market conditions over the next five years.


## Proposed Stock and Supply

Project Address	Development Status	Estimated Completion Date	Office NLA (sq.m)
7 Charles Street	Construction	2024	5,000
197 Church Street	Construction	2025	35,000
64-66 Phillip Street	DA Applied	2027	6,265
132 Marsden Street	DA Approved	2028	10,000
81 George Street	DA Approved	2030	50,000
Cnr Argyle and Fitzwilliam Street	DA Applied	2030	30,000
33 Argyle Street	DA Applied	2030	3,570
110 George Street	DA Approved	2031	53,000
140 George Street	DA Approved	2031	43,800
<b>Total Proposed Commercial Floorspace</b>			<b>236,635</b>

Source: PCA, Cordell Connect, Cityscope, Developer websites, Urbis Office Model

Note: Completion dates have been adjusted outwards factoring in expected market conditions

# 3.2

A woman with long dark hair, wearing a white dress with a green and black floral pattern, is standing in an office. She is holding a black marker and writing on a glass wall. Several colorful sticky notes (yellow, blue, pink, green) are already attached to the glass. The background shows a modern office interior with glass partitions and ceiling lights.

## OFFICE DEMAND AND VACANCY



# OFFICE DEMAND DRIVERS

## Key Findings

The future demand for commercial office space within the Office Study Area has been forecast by adopting the Australian Bureau of Statistics (ABS) and Transport for NSW (TfNSW) employment projections for the Study Area. Based on the employment projections, employment in the Office Study Area is projected to grow by 2.4% from around 33,160 in 2024 to more than 37,250 in 2029. This is a total of 4,096 jobs. By 2029, TfNSW forecasts strong growth in several industry sectors requiring commercial floorspace. The key growth industries include:

- Financial and Insurance Services (+1,584 jobs, +2.9% per annum)
- Professional, Scientific and Technical Services (+753 jobs, +2.7% per annum)
- Public Administration and Safety (+745 jobs, +1.8% per annum).
- Health Care and Social Assistance (439 jobs, +3.9% per annum).

The solid forecast employment in the top four sectors indicates some demand for commercial office space to support the additional jobs. In total, the 4,096 additional jobs in the CBD equates to around 61,440 sq.m of office space, applying a floor space ratio of 15 sq.m per worker. This indicates a potential gross absorption of 12,288 sq.m per year. There are also likely to be moves out of the market, and a portion of these workers are likely to at least partially work from home. This allows companies to take less space than has traditionally been the case.

## Employment Growth Forecasts, 2024 – 2029

	2024		2029		2024-29	
	No.	%	No.	%	Total Change	Annual Growth (%)
Financial and Insurance Services	10,434	31%	12,019	32%	1,584	2.87%
Professional, Scientific and Technical Services	5,375	16%	6,128	16%	753	2.66%
Public Administration and Safety	8,035	24%	8,780	24%	745	1.79%
Health Care and Social Assistance	2,061	6%	2,500	7%	439	3.93%
Administrative and Support Services	1,194	4%	1,338	4%	144	2.30%
Education and Training	834	3%	961	3%	127	2.89%
Rental, Hiring and Real Estate Services	902	3%	975	3%	73	1.57%
Other Services	463	1%	531	1%	68	2.77%
Arts and Recreation Services	153	0%	216	1%	63	7.18%
Information Media and Telecommunications	485	1%	537	1%	53	2.08%
Electricity, Gas, Water and Waste Services	554	2%	585	2%	31	1.10%
Wholesale Trade	385	1%	398	1%	14	0.70%
Manufacturing	485	1%	496	1%	11	0.44%
Transport, Postal and Warehousing	380	1%	392	1%	11	0.58%
Agriculture, Forestry and Fishing	16	0%	17	0%	1	1.39%
Mining	11	0%	10	0%	0	-0.50%
Construction	702	2%	701	2%	-1	-0.03%
Accommodation and Food Services	191	1%	183	0%	-8	-0.87%
Retail Trade	504	2%	492	1%	-12	-0.46%
<b>Total</b>	<b>33,164</b>	<b>100%</b>	<b>37,260</b>	<b>100%</b>	<b>4,096</b>	<b>2.36%</b>

Source: ABS; TfNSW; Urbis

# OFFICE DEMAND DRIVERS

## Key Findings

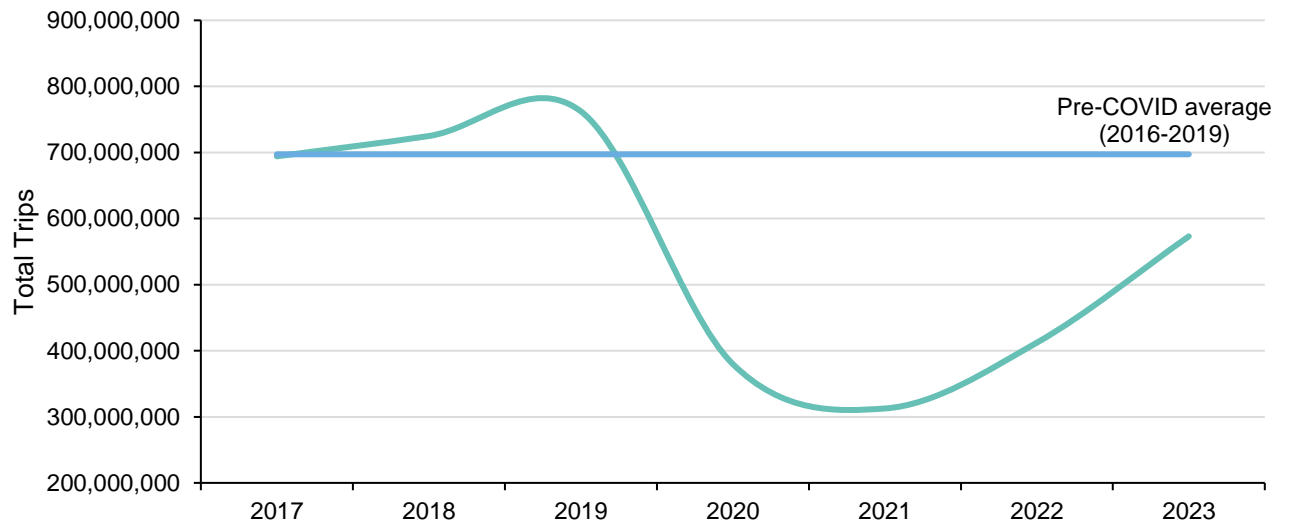
Remote working opportunities increased markedly during the pandemic, with many companies permanently providing flexible or hybrid positions. As most workers commute into Parramatta via public transport, Transport for NSW opal card data provides a substantial measure of the number of workers returning to the office. The chart shows the total trips to Parramatta Train Station via all public transport modes. Total trips are starting to increase but are still well below pre-pandemic averages, and, as of December 2023, were at 75.2% of 2019 levels. This level is likely to decrease again in 2024 as the first four months of 2024 have been 10% below the same time last year. This data indicates on average, people are working 2 to 3.5 days in Parramatta. This may return to 4 days a week, but Urbis believe it is likely to stabilise around this level.

According to the ‘Taking the Pulse of the Nation’ Survey, run by The University of Melbourne, 70% of Australians who work from home would like to continue doing so. Work from home trends are likely to stay, with many workers expressing a preference for working remotely. Opal card data indicates a structural shift in work patterns to the detriment of the office sector.

An indicator of this shift is the high and increasing office vacancy across the major office markets. As shown in the table, office vacancy rose in major Sydney precincts by between 8.3% and 19.3 percentage points from January 2020 to January 2024. The current vacancy rates reflect office markets heavily favouring tenants.

Further increases in vacancy are likely across Sydney as companies continue to ‘right size’ and lease smaller office spaces.

## All Trips to Parramatta Train Station, 2017 – 2023



Source: TfNSW; Urbis

## Impact of Office Structural Change on Total Vacancy in Major Sydney Markets

CBD	January 2020	January 2024
Parramatta	3.2%	22.0%
Macquarie Park	4.6%	20.1%
Chatswood	3.7%	18.8%
Crows Nest/St Leonards	7.0%	26.3%
North Sydney	7.6%	24.2%
Sydney	3.9%	12.2%

Source: Property Council of Australia Office Market Report (January 2024)



# HISTORICAL OFFICE DEMAND AND VACANCY

## Key Findings

The opal data has shown that the pandemic has significantly changed work patterns, sharply increasing remote working opportunities. This has caused substantial changes to the office sector in the Office Study Area.

One indicator of this shift is **the increase in office vacancies**. Office vacancies have substantially increased in the Office Study Area and Parramatta City South by ~19% and ~21%, respectively, from January 2019 to January 2024). The 212,416 sq.m of vacant commercial floorspace in the Office Study Area as of January 2024 reflects an office market heavily favouring tenants, particularly in B-grade stock, as tenants experience the ‘flight to quality’ phenomenon and upgrade to newly completed A-grade spaces. This is largely driven by rents being offered in these buildings at lower rates than what they are currently paying under existing lease terms and incentives being offered that pay for the entire move and fit out of any new space taken up.

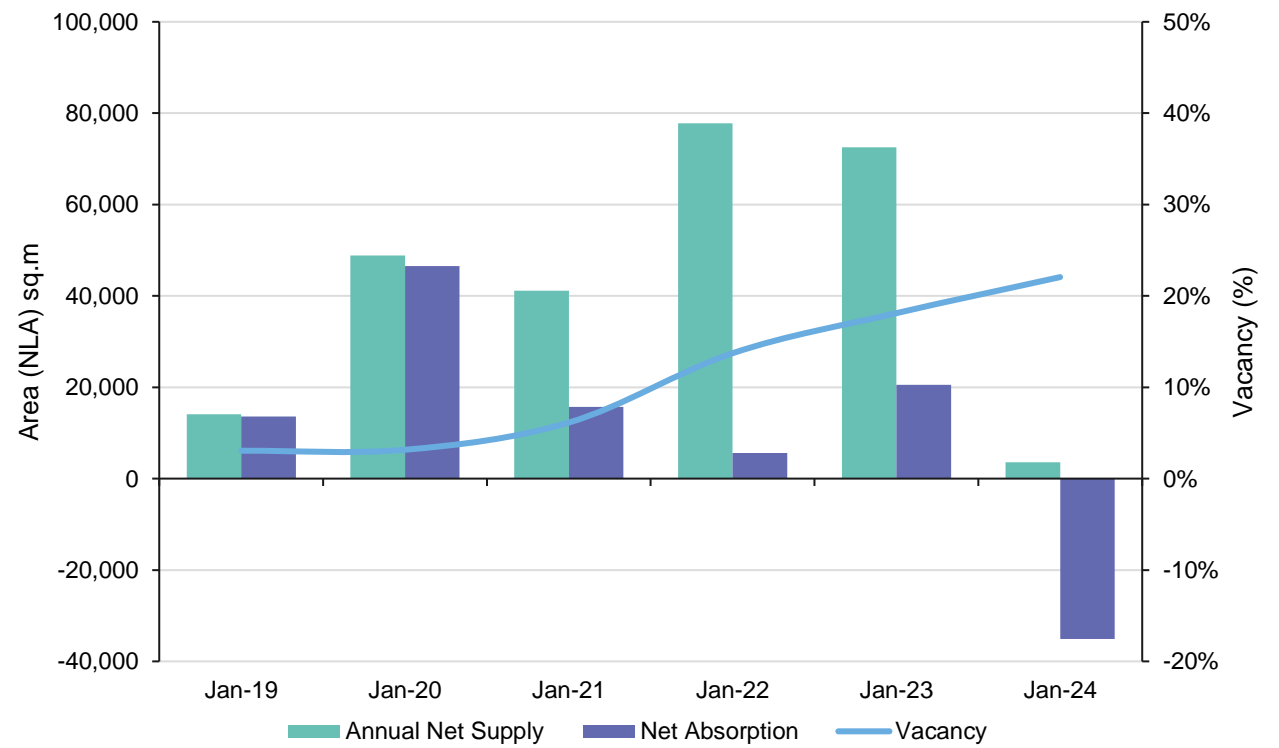
During January 2024, the total vacancy for the Study Area was 22%. This compares with the pre-COVID-19 rate of circa 3%.

The significant increase in office vacancies within Parramatta City South (the closest PCA office sub-locale to the Subject Site) since the pandemic coincides with the completion of four large office buildings in Parramatta Square, which have more convenient access to public transport, retail amenities, and agglomeration benefits.

Further increases in vacancy are likely across Sydney as companies continue to ‘right size’ by leasing smaller office spaces on lease expiry.

The negative net absorption (reduction in tenant leased space) over the year to 2023 is in part driven by this right-sizing.

Office Study Area Annual Office Market Net Absorption and Vacancy, Jan 2019 - Jan 2024



Source: PCA, Cordell Connect, Cityscope, Developer websites, Urbis Office Model

# FORECAST OFFICE DEMAND AND VACANCY

## Key Findings

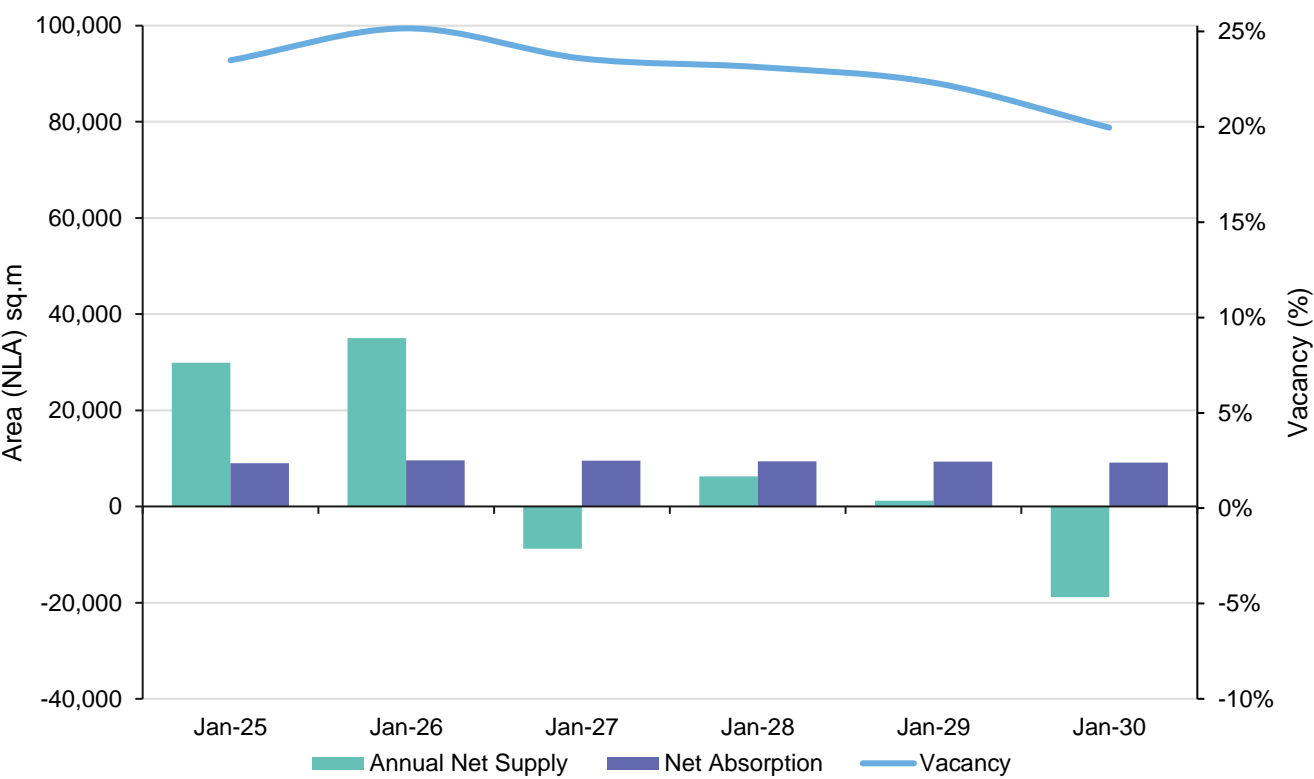
As shown on the previous page, the Office Study Area witnessed a sustained low level of vacancy in the period prior to COVID-19. However, the continuous supply of commercial office space has placed significant pressure on the market, particularly secondary (consisting of B-Grade, C-Grade and D-Grade stock) grade stock, with many tenants taking advantage of high incentives and lower rents on offer to upgrade to new, A-grade facilities.

Over the five years to January 2030, the Office Study Area is anticipated to see moderate net absorption in line with historical averages. This is due to forecast increases in office-based employment, as illustrated on page 16. However, vacancies are set to remain at or above 20% over the next four years, peaking at ~25% in January 2026.

It must be noted that it took approximately four years for Parramatta CBD to exit the early 90's downturn. This was a supply-led downturn, and vacancy only peaked at 15.2%. It is likely that the current downturn (which is already significantly more severe) will be prolonged by the combination of stronger supply and the structural change brought about by an increased acceptance of employees working from home. Office vacancy in Parramatta going into the early-90s downturn (2.6%) was similar to the current downturn (3.0%), and net supply was 161,417 sq.m, whereas net supply over the current supply cycle has been 243,839 over the same 3.5-year lead-in period and is still underway.

This indicates vacancy is likely to remain high over a significantly longer period, resulting in greater difficulty for the office market during the next 5-10 years than during the early-90's recession .

Office Study Area Annual Office Net Absorption and Vacancy, Jan-25 – Jan-30



Source: PCA, Cordell Connect, Cityscope, Developer websites, Urbis Office Model



# 3.3

## OFFICE RENTS AND INCENTIVES



# RENTAL AND INCENTIVE MARKET

## Key Findings

Office rents are another key indicator of demand for office space in a market. Decreasing rents and rising incentives signify a lower need for office space as landlords have to discount effective rents to attract tenants.

There has been a distinct ‘flight to quality’ in Sydney generally, and particularly in the Office Study Area, with vacancy in the A-grade market at 18.4% compared to 40% in B-grade stock. Face rents have not significantly responded to the current supply and demand discrepancy as owners try to keep these stable. High incentives, however, have increasingly become commonplace, notably for institutionally owned assets, resulting in significant decreases in effective rents. B-grade rents have been under greater pressure as vacancies continue to increase, and the flight-to-quality continues. This is due to the lower effective rentals available in prime space and the need for tenants to have higher-quality and located office space to attract tenants back into the office.

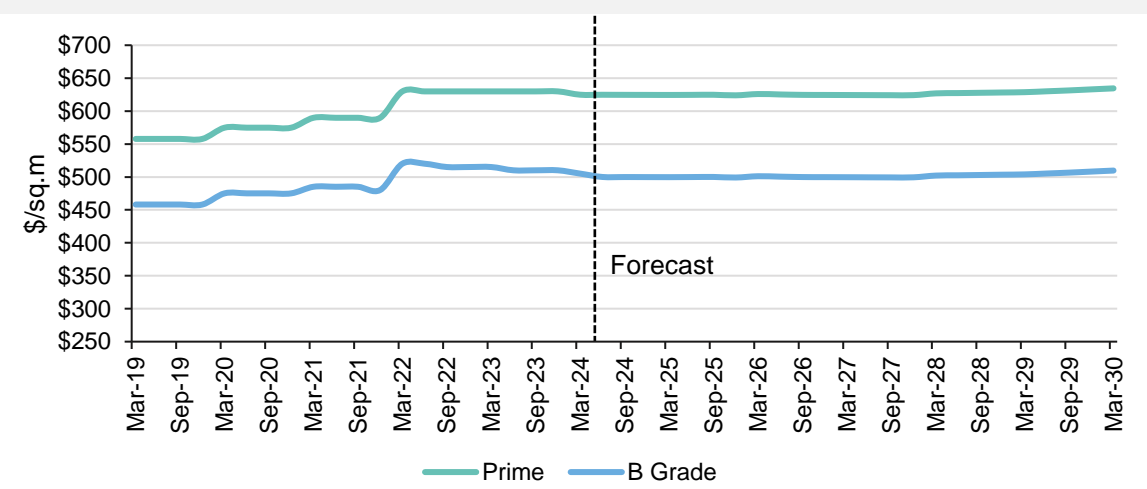
Despite market challenges, face rents are expected to stabilise in the short term. As of March 2024, net prime face rents sat at \$625/sq.m, relative to the \$505/sq.m achieved in the B-grade office market.

The Office Study Area Prime Office Market experienced volatile net effective rents from March 2019 to March 2023, peaking at \$528/sq.m and quickly declining to \$386/sq.m in March 2022. Since March 2019, Prime incentives in the Market have increasingly become more significant, growing from 8% in March 2020 to approximately 36% in March 2024. Urbis forecasts that incentives will increase to around 43% towards the second half of 2025 before gradually declining to a still high 35% by March 2030.

Net effective rents are forecast to be subdued over the short to medium term, due to incentives remaining high.

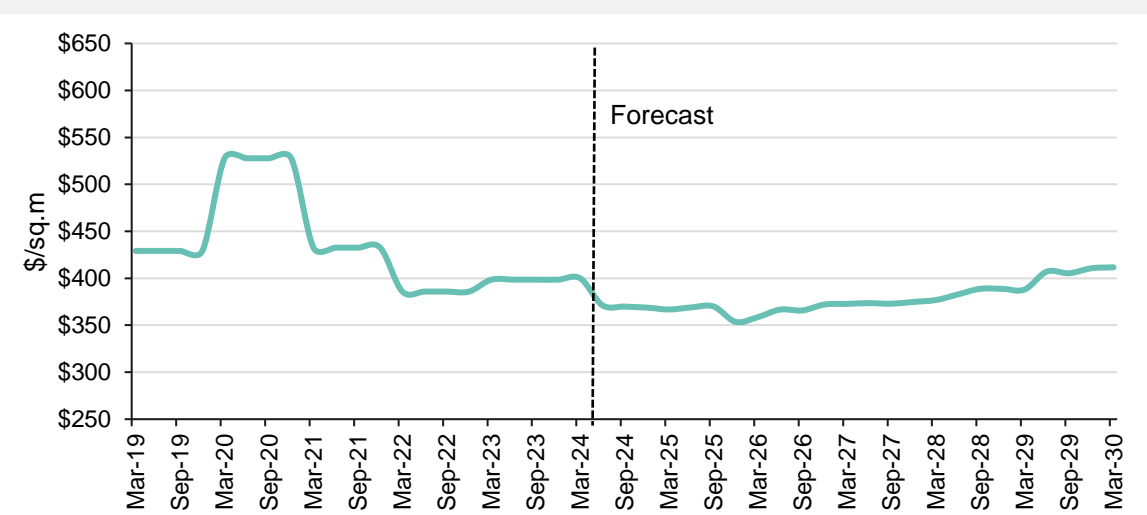
The Subject Site is located in a secondary location just outside of the fringe of the PCA-defined Parramatta CBD market and is, therefore, more likely to achieve closer to B-Grade rentals.

Office Study Area Net Face Rents, Mar 2019 – Mar 2030



Source: PCA, Cordell Connect, Developer websites, Urbis Office Model

Office Study Area Prime Net Effective Rents, Mar 2019 – Mar 2030



Source: PCA, Cordell Connect, Developer websites, Urbis Office Model



3.4

## COMMERCIAL OFFICE RECOMMENDATIONS



# RECOMMENDATIONS

## Key Findings

The outlook for the office market is weak in the short to medium term. While a significant number of pure office supply additions have been postponed due to uncertainty and unfeasibility in current market conditions, the prospect of further refurbished or mixed-use supply being added to the market in the short to medium term will keep vacancies elevated.

While office face rents are unlikely to see much growth over the short to medium term due to the stock available in the market, net effective rents may see some improvement if incentives decline from their current high. The ‘flight to quality’ will likely remain a prominent factor as tenants seek out affordable A-grade stock over secondary offerings. Secondary stock and that outside the Mid City is, however, unlikely to see any rental growth over the short to medium-term

Urbis forecast the achievable prime net face rent in the Office Study Area to range between \$624/sq.m to \$635/sq.m and B-Grade to range from \$505/sq.m to \$510/sq.m from 2024 to 2030.

The starting rents for commercial office pre-commitments in the Office Study Area over the past few years ranged from \$558/sq.m to \$751/sq.m, significantly higher than the \$505/sq.m net face rents being achieved in the Office Study Area B-grade commercial office market at current. This is likely to render the office component of this development unfeasible. The data and findings outlined in this report demonstrate that due to the current and forecast office market conditions, it is highly unlikely that a commercial development at the Subject Site will be economically feasible over the short to medium term. Therefore, alternative land uses such as residential should be explored.

## Key Commercial Office Metrics in the Office Study Area

Forecast Prime Net Effective Rent (\$/sq.m) (2024-2030)	\$354 - \$412
Forecast Prime Net Face Rent (\$/sq.m) (2024-2030)	\$624 - \$635
Forecast B-Grade Net Face Rent (\$/sq.m) (2024-2030)	\$505 - \$510
Current Pre-Commitment Rent in Parramatta Mid-City (2023-2024)	\$558 - \$751
Forecast Vacancy Rate (2024-2030)	20% - 22%

Source: PCA, Cordell Connect, Developer websites, Urbis Office Model  
Note: Pre-commitment rents are historical and compared to forecasts. Pre-commitment rents provide an indication of rents needed for buildings to commence. This shows we are not expecting the market to reach sufficient rents for new buildings to commence over the period from 2024-2030.





04

# RESIDENTIAL

# HISTORICAL AND PROJECTED POPULATION GROWTH

## Key Findings

To determine the potential demand for a residential development at the Subject Site, Urbis have adopted the Parramatta Local Government Area (LGA) as our Residential Study Area.

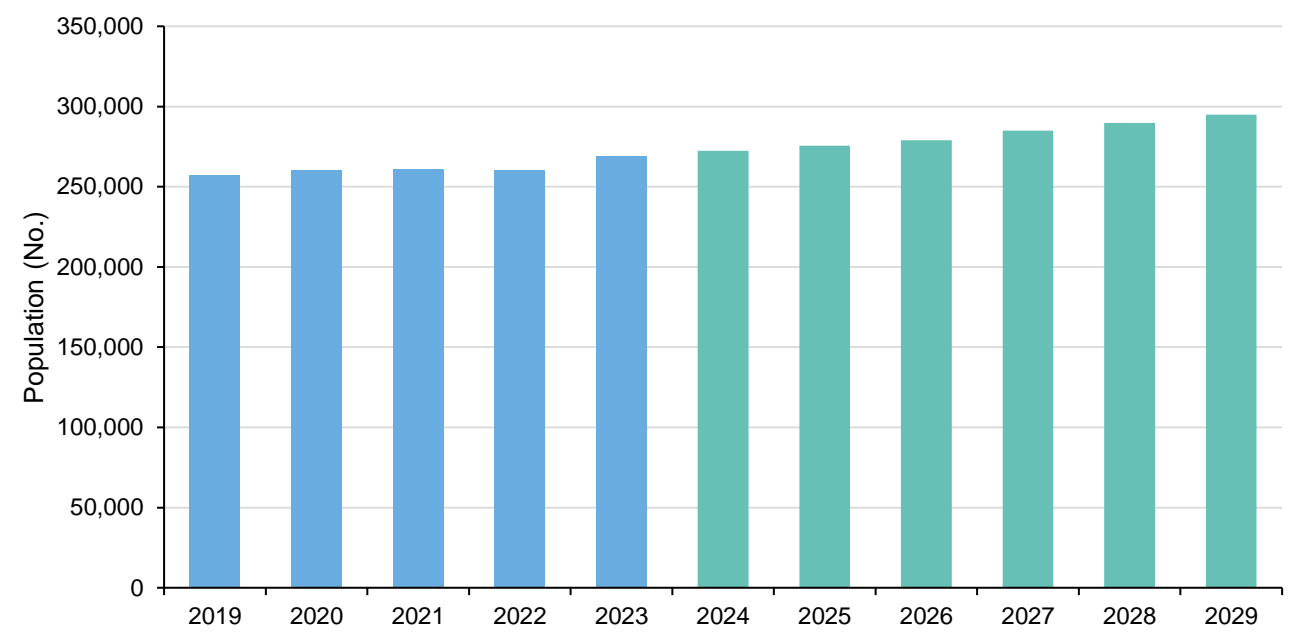
The rate and extent of future population growth in the Residential Study Area will have a substantial bearing on future demand for residential apartments.

The Chart shows historical and projected population growth within the Residential Study Area between 2019 and 2029. From 2019 to 2024, the Study Area population grew by an average of 1.2% per annum to reach ~272,351 residents in 2024. According to official DPHI projections, the Study Area is estimated to experience population growth between 2024 and 2029, averaging 1.6% per annum to reach ~294,872 residents in 2029. This equates to an additional ~22,521 residents during this period.

The Table highlights the Residential Study Area household size projections between 2021 and 2041. The Study Area is projected to see a decline in average household size over the forecast period. This reflects the Study Area's potential for smaller products to meet the needs of smaller households, including the growing cohort of lone-person households.

Families and couples remain a key driver of the market, and while their share is likely to reduce as a percentage over the outlook period, they are still going to take a large share of the available apartments.

Residential Study Area Historical and Projected Population Growth, 2019 – 2029



Source: ABS; DPHI; Urbis

Household Size Projections, 2021 – 2041

	2021	2026	2031	2036	2041
Residential Study Area	2.70	2.69	2.66	2.62	2.60

Source: ABS; DPHI; Urbis



# SOCIO-DEMOGRAPHIC CHARACTERISTICS

## Key Findings

The chart, overleaf, summarises the key demographic characteristics of residents within the Residential Study Area relative to the Greater Sydney average, as at the ABS Census 2021. Key findings include:

- The Residential Study Area saw average household incomes increase by 3.8% over the last 10 years to \$133,400 in 2021. Although they remain below the Greater Sydney benchmarks.
- The average age of the Residential Study Area residents is 37 years, ~4% lower than the Greater Sydney average. This variance reflects the high proportion of residents under 36 years of age and families with children within the Study Area, indicating potential demand for young establishing families looking to live close to employment opportunities and amenities and who are willing to rent.
- Apartments account for 47% of the Residential Study Area dwellings, significantly higher than the 31% in Greater Sydney. This reflects the Study Area's proximity to a CBD location, availability of amenities and apartment affordability compared to Greater Sydney.
- Around 47% of the Residential Study Area households are renting, 10% higher than the benchmark, indicating potential demand from investors.
- In 2021, the Residential Study Area recorded a significantly higher proportion of overseas-born residents relative to Greater Sydney. This is likely attributed to the proximity of the Study Area to amenities, employment, education and medical precincts.
- Around 80% of employed residents in the Residential Study Area are white-collar workers, which is slightly higher than the Greater Sydney average.

Overall, the 2021 resident population of the Residential Study Area can generally be characterised as comprising young families with children who are renting or paying off their mortgage. In addition, there is a relatively high proportion of

residents who have obtained tertiary certifications due to the presence of Western Sydney University campuses and other tertiary institutions in the area.

The continued growth of residents and household formation in Greater Sydney and Parramatta LGA is driving a need for further housing. Parramatta has a lower household size than Greater Sydney and a mix of household types, which indicates a need for housing diversity. With apartment living already accepted within much of Parramatta LGA, particularly in and around the City, there is further opportunity to increase density and meet this housing demand.

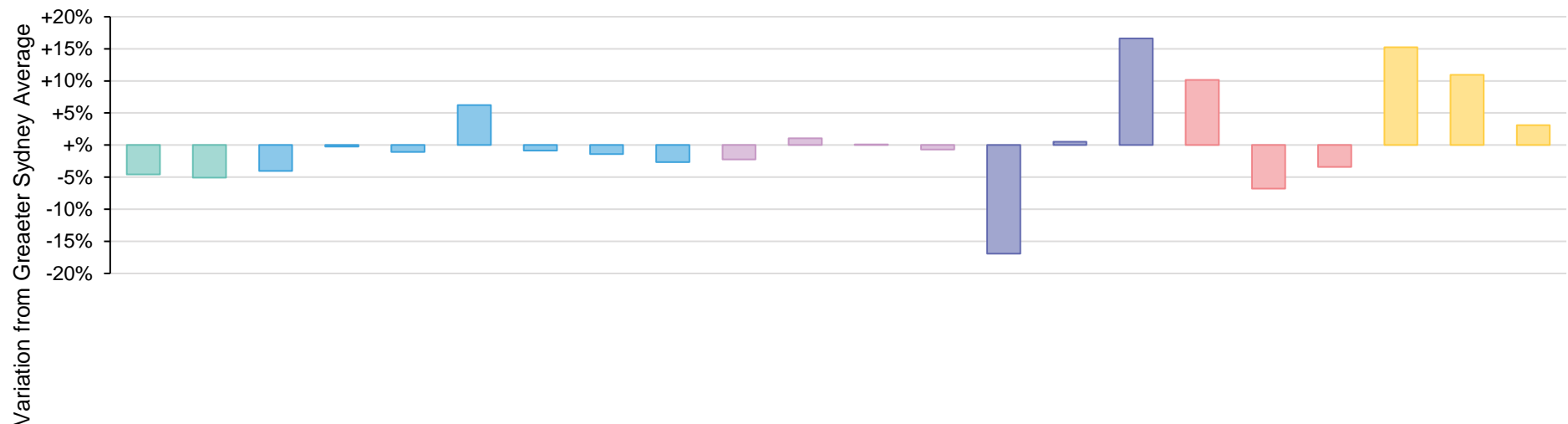
It was found that couple households and lone-person households, which are more likely to be located in higher-density dwellings, particularly apartments accounted for almost half the population in Parramatta LGA as at the 2021 Census.

The lower personal and household incomes in the Study Area compared to Greater Sydney also means affordability of future housing needs to be considered. Apartments are generally cheaper than houses and will, therefore, better meet these affordability needs.

Residents are likely to be attracted to the Residential Study Area because it offers larger apartments at a relatively affordable price point without compromising on amenities, employment, or education opportunities.

# SOCIO-DEMOGRAPHIC CHARACTERISTICS

Key Demographic Characteristics, Residential Study Area and Greater Sydney, 2021



	Income		Age Profile							Household				Dwelling Type			Tenure Type			Other		
	Avg. Per Capita Income	Avg. Household Income	Avg. Age	0-14	15-24	25-39	40-54	55-64	65+	Avg. Household Size	Couple Family with Children	Couple Family with No Children	Lone Person Households	House	Semi-detached	Apartment	Renter	Owner	Purchaser	Born Overseas	Bachelor Degree or Higher	White Collar
	(\$)	(\$)	(years)	(% pts)	(% pts)	(% pts)	(% pts)	(% pts)	(% pts)	(persons)	(% pts)	(% pts)	(% pts)	(% pts)	(% pts)	(% pts)	(% pts)	(% pts)	(% pts)	(% pts)	(% pts)	(% pts)
Residential Study Area	\$65k	\$133k	36.9	18%	11%	30%	19%	10%	13%	2.6	37%	24%	23%	39%	13%	47%	47%	22%	31%	56%	65%	80%
Greater Sydney	\$68k	\$140k	38.4	18%	12%	23%	20%	11%	15%	2.7	36%	24%	23%	56%	13%	31%	37%	29%	34%	40%	54%	77%

Source: ABS; Urbis





4.1

---

# RESIDENTIAL SUPPLY ANALYSIS



# EXISTING RESIDENTIAL SUPPLY

## Key Findings

This section provides an assessment of the existing and proposed supply of residential dwellings in the Residential Study Area.

The Chart top right shows new dwelling approvals within the Residential Study Area between FY18 and FY24. New dwelling approvals in the Study Area have historically been dominated by apartment developments, accounting for an average of 76% of total approvals.

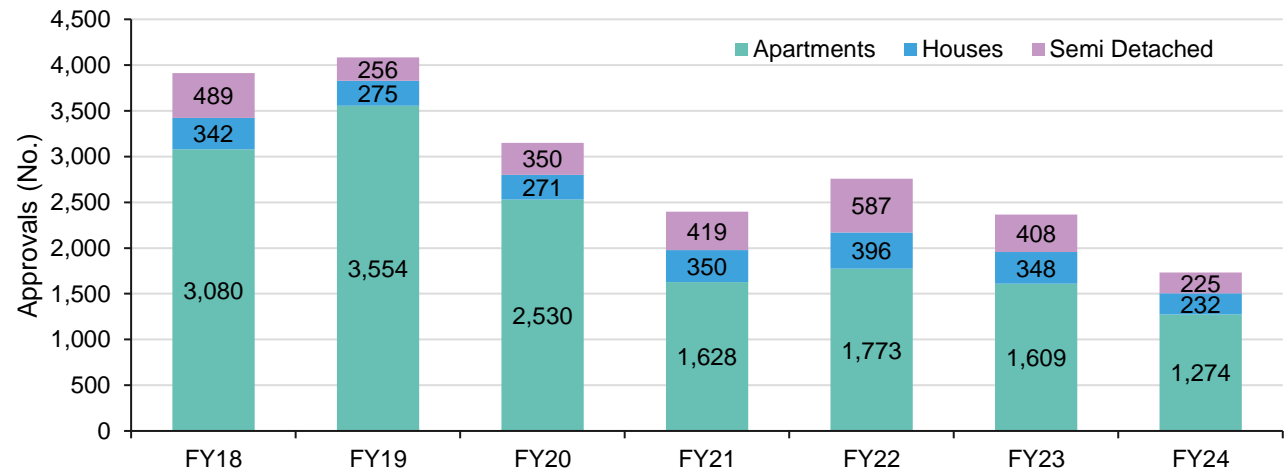
Approvals peaked at almost 4,100 dwellings in FY19 and remained high in FY20, reflecting the 'flight to suburbia' trend catalysed by the pandemic. However, approvals have since fallen, spurred by high construction costs and interest rates.

The Chart at the bottom right shows new dwelling completions within the Residential Study Area between FY18 and FY23 (the latest available data). Similar to approvals, apartments accounted for an average of 80% of dwelling completions during this period. Semi-detached and houses comprised 14% and 6%, respectively.

Completions have declined since FY18, averaging ~2,890 dwellings per annum. Below-average approvals since FY23 will likely translate to fewer completions over the short—to medium-term. This will likely be fueled by the current high construction costs and interest rate environment, which will continue to put pressure on project feasibility.

The Subject Site is well placed to deliver additional housing over the medium to longer term to help fill any supply gap.

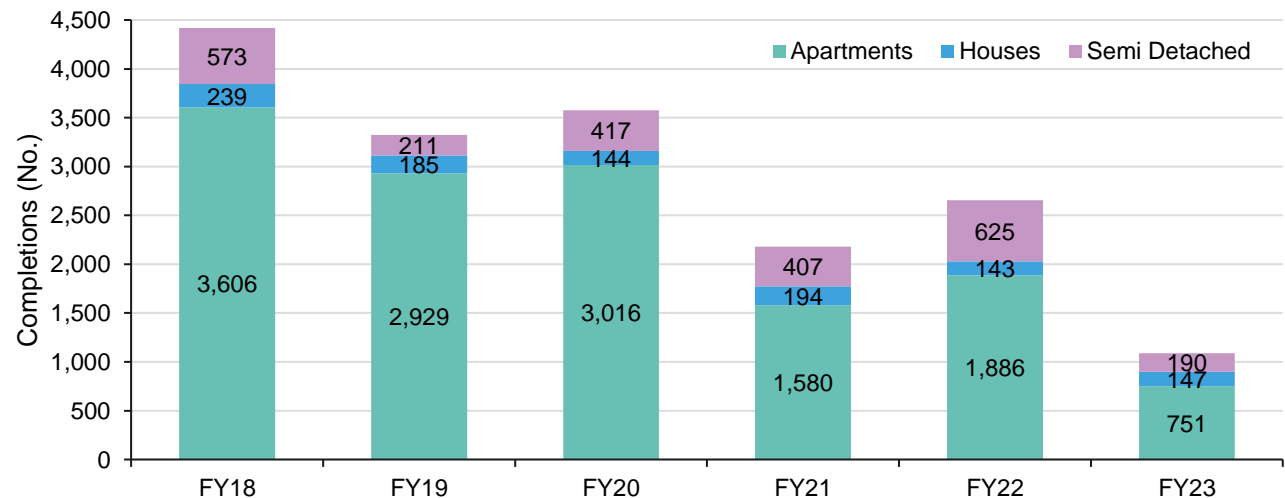
## Residential Study Area New Dwelling Approvals, FY18 – FY24\*



\*FY24 Approvals are to April 2024

Source: UDP; Urbis

## Residential Study Area New Dwelling Completions, FY18 – FY23



Source: UDP; Urbis



# FUTURE RESIDENTIAL SUPPLY

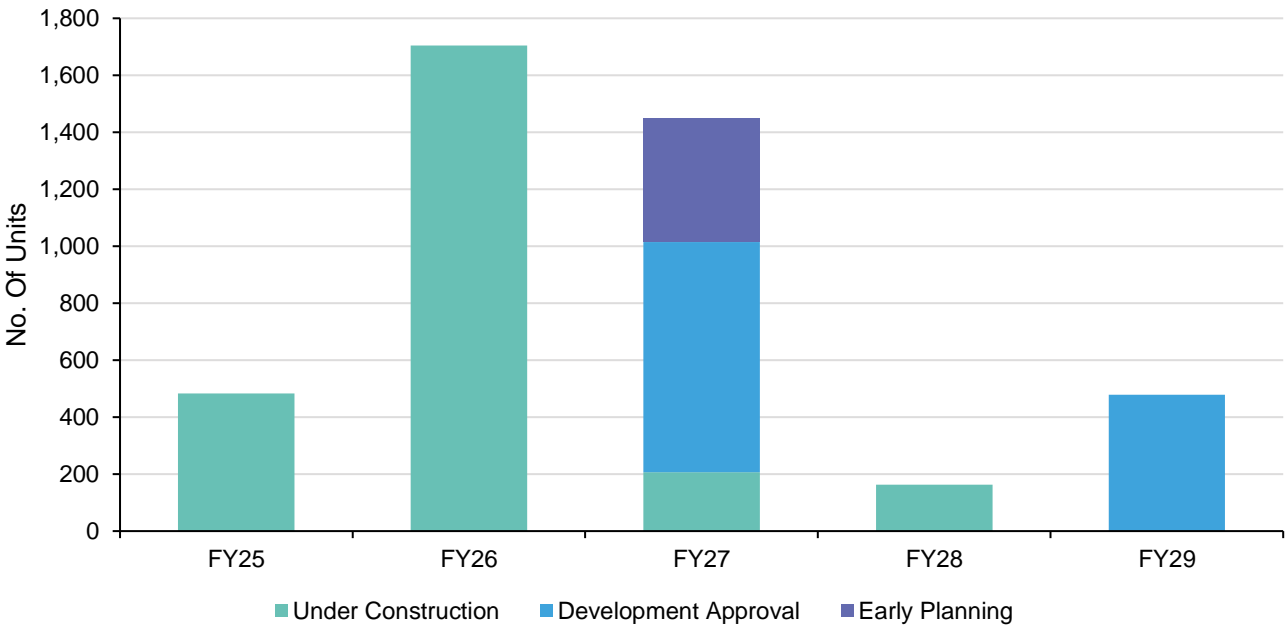
## Key Findings

According to Cordell and Urbis research, there are 15 new residential apartment projects in the Residential Study Area. These projects, with an average size of 285 units, are at various stages of development, from early planning to under construction.

The Chart adjacent shows the status of the proposed residential apartment projects in the Residential Study Area by stage and financial year. Of the proposed apartments, a majority, 60%, are in the construction phase, 30% are in the development approval stage, and 10% of projects are in the early planning stages and face a higher probability of changes and delays.

Approximately 67% of apartments currently under construction are expected to be completed by FY26.

Proposed Apartments by Year and Status, Study Area



Source: Cordell; Urbis Essentials

# TRANSACTION VOLUMES AND SALES PRICE GROWTH

## Key Findings

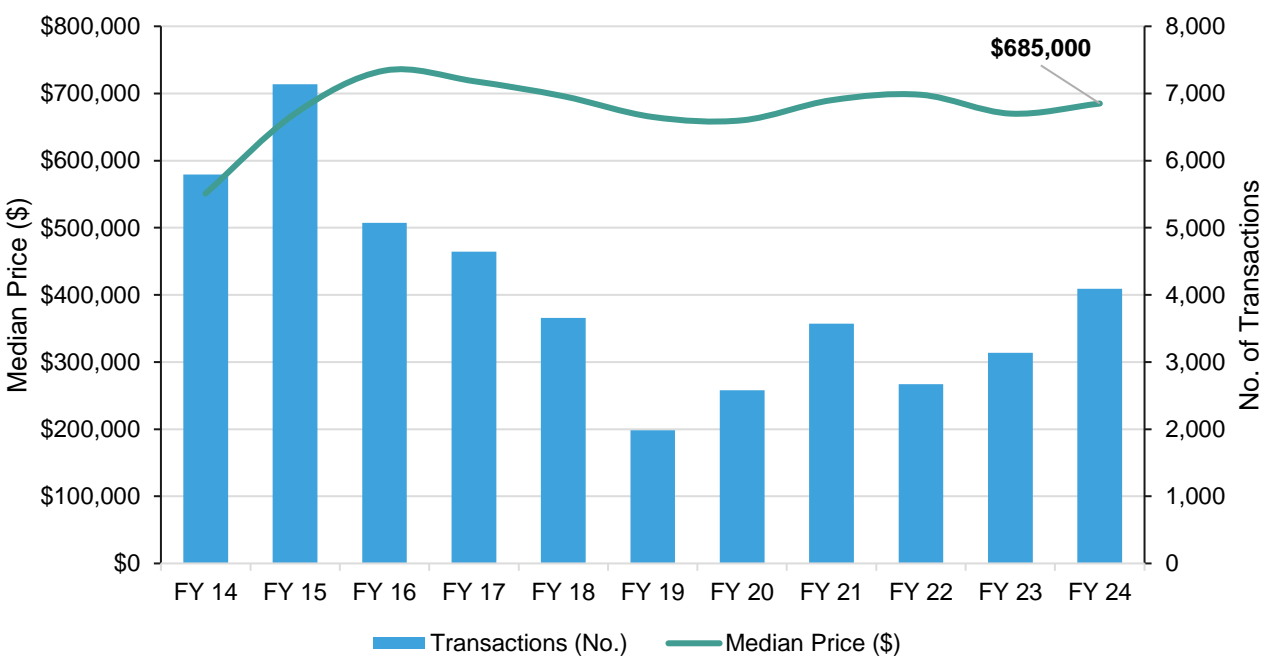
The Chart shows historical apartment prices and transactions between FY14 and FY24.

The Residential Study Area has recorded a steady launch of new apartment projects since FY14. New apartment transactions peaked in FY15 as the Sydney apartment market was booming and major apartment projects were launched. However, new sales slowed in line with the broader Sydney market downturn in FY18. Since FY20, prices have increased, reflecting the Study Area's resilience to the impacts of COVID-19 and consistent demand for an attractive location surrounding Sydney's second CBD.

Between FY14 and FY18, median apartment prices in the Residential Study Area grew, averaging 6.0% per annum, to \$695,900. During this period, the Residential Study Area averaged ~5,260 sales annually.

Median apartment prices then remained steady through to FY20, before the onset of the pandemic, before experiencing near year-on-year growth through to FY24, during the COVID-induced 'flight to suburbia' boom. In FY23-FY24 median apartment sales prices have stabilised, reflecting the impacts of interest rate hikes on sales and affordability.

## Residential Study Area Apartment Price Growth, FY14 – FY24



Source: Pricerfinder; Urbis.

Note: Chart shows settled sales volumes and pricing



# PRIVATE RENTAL MARKET

## Key Findings

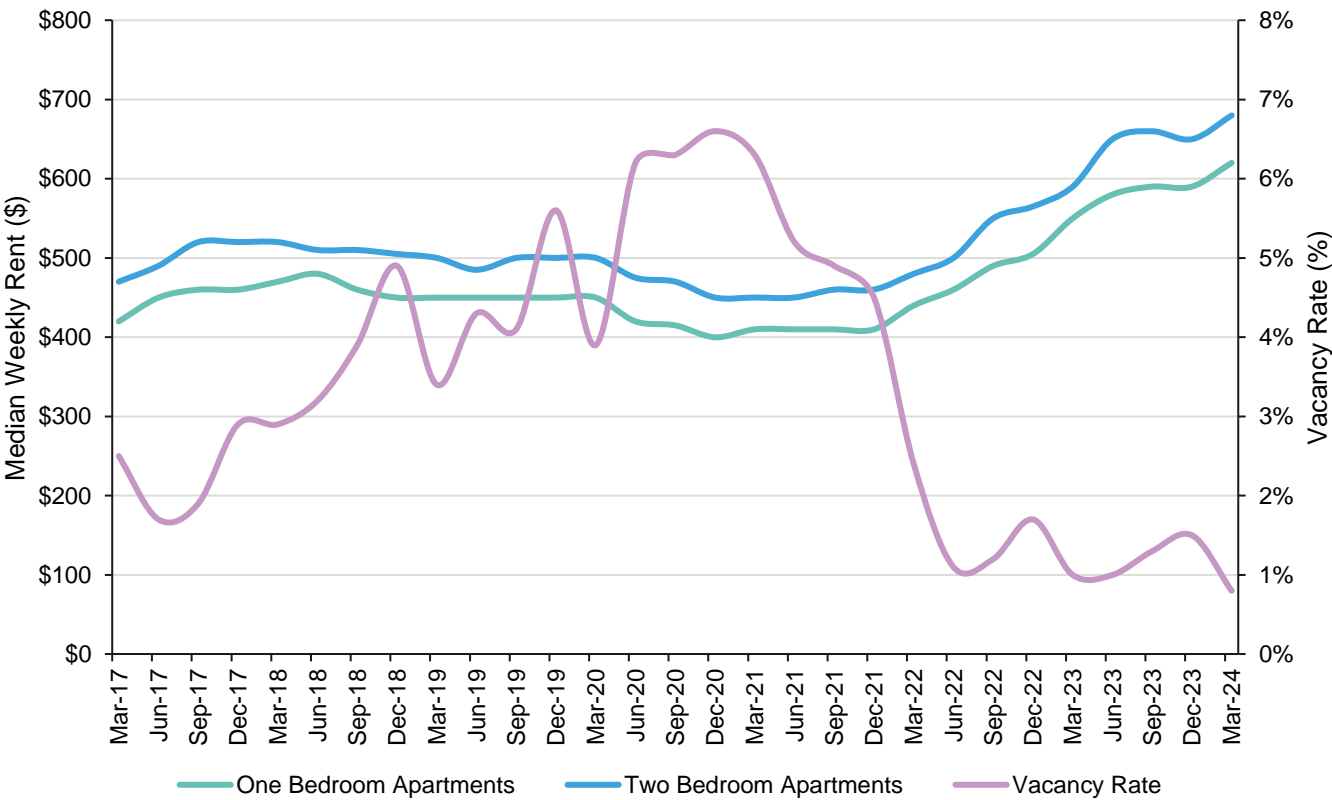
The rental market provides a good indication of the current state of the residential market, with rents and vacancy rates responding quickly to changes in supply and demand dynamics. The Chart adjacent depicts historical vacancy rates and median weekly apartment rents in the Residential Study Area between March 2017 and March 2024.

Between March 2017 and March 2019, one- and two-bedroom apartments in the Residential Study Area generally increased by 3.5% and 3.1% per annum, respectively. During this period, the Residential Study Area witnessed an increase in vacancy, with some spikes likely associated with new supply coming online.

Vacancy rates in the Residential Study Area then reached a peak of 6.6% in December 2020, during the onset of the pandemic, before tightening significantly to reach 1.1% by June 2022. During this period, the Residential Study Area recorded strong rental growth, with one-bedroom apartments averaging 7.2% per annum to reach \$460 per week and two-bedroom apartments averaging 5.4% growth per annum to reach \$500 per week.

Vacancy rates in the Residential Study Area have since remained below equilibrium (2.5%-3.5%) and recorded a historic low of 0.8% in March 2024. Weekly median apartment rents have continued to rise, reaching \$620 for one-bedroom apartments and \$680 for two-bedroom apartments in March 2024, reflecting potential housing supply constraints in the area.

Median Weekly Apartment Rents and Vacancy Rates, March 2017 – March 2024



Source: Department of Communities and Justice; SQM Research; Urbis

# 4.2

---

## RESIDENTIAL NEEDS ASSESSMENT





# RESIDENTIAL NEEDS VERSUS SUPPLY FORECAST

## Key Findings

The Table, right, details forecast residential apartment need within the Residential Study Area between FY25 and FY29.

Based on official population and household size projections released by ABS and DPHI, there is projected need for an additional ~1,404 dwellings in FY24, growing to demand for ~2,295 dwellings in FY29. Apartments are estimated to account for 75% of dwelling need in FY24, based on historical shares of dwelling approvals and completions. This is anticipated to increase to 80% by FY29. This will be driven by the continued densification in and around the Residential Study Area. Urbis estimate that in the Study Area, there is cumulative demand for approximately 1,067 apartments in FY25, growing to ~7,622 in FY29.

We then applied the forecast apartment supply pipeline in the Residential Study Area, which includes projects that are under construction, have received development approval or have applied for development approval. It is estimated that there is an undersupply of apartments in the Residential Study Area in FY25 of 584 apartments, relative to demand. The Study Area is then forecast to enter a slight oversupply of 60 apartments as the majority of developments under construction come online. This isn't expected to last long, with the Study Area forecast to return to a shortage of apartments in FY27. Undersupply is expected to continue until FY29 when a shortfall of ~3,778 apartments will have accumulated. This is further compounded by an undersupply of housing that the vacancy rates indicate has existed in the Study Area since March 2022.

## Residential Study Area Apartment Demand and Gap Analysis, FY25-FY29

	FY24	FY25	FY26	FY27	FY28	FY29
Study Area Population	272,351	275,595	278,877	284,978	289,708	294,872
Study Area Household Size	2.5	2.5	2.5	2.5	2.5	2.5
Study Area Annual Dwelling Requirement	-	108,746	110,124	112,657	114,786	117,082
Study Area Annual Dwelling Need	-	1,404	1,378	2,533	2,129	2,295
<i>Apartment Share of Dwelling Need (%)</i>	75%	76%	77%	78%	79%	80%
Study Area Annual Apartment Need	-	1,067	1,061	1,976	1,682	1,836
<b>Cumulative Apartments Need</b>	-	<b>1,067</b>	<b>2,128</b>	<b>4,104</b>	<b>5,786</b>	<b>7,622</b>
Study Area Annual Apartments Supply Pipeline	-	483	1,705	1,015	163	478
Study Area Cumulative Apartments Supply Pipeline	-	483	2,188	3,203	3,366	3,844
<b>Apartment Gap (+oversupply/-undersupply)</b>	-	<b>-584</b>	<b>60</b>	<b>-901</b>	<b>-2,420</b>	<b>-3,778</b>

Sources: DPHI, ABS, Cordell Connect (June 2024), and Urbis Essentials (June 2024).

# RESIDENTIAL NEEDS VERSUS SUPPLY FORECAST

## Key Findings

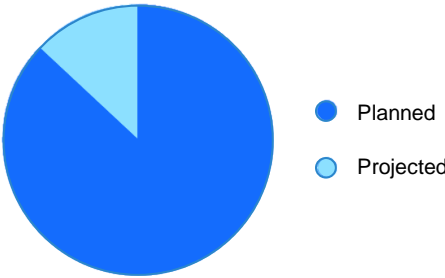
In May 2024, the NSW Government released five-year housing completion targets, responding to the National Housing Accord target to deliver 377,000 new well-located homes across the State by FY29. The City of Parramatta has a target to achieve 19,500 new dwellings by FY29. Urbis has applied the Greater Sydney Urban Development Program housing supply forecasts from FY25 to FY27 and the 10-year completions average of 3,138 dwellings in FY28 and FY29, which is significantly higher than what has been achieved in FY23 and FY24. Looking at the difference there is an undersupply of approximately 6,374 dwellings in the Parramatta LGA by FY29.

A residential development at the Subject Site provides a shovel-ready opportunity to deliver a significant number of apartments to the Study Area, helping meet the significant need for apartments as well as bridging the undersupply of dwellings compared to the Parramatta Council's Dwelling Targets.

## Parramatta Council Housing Targets Five Years to FY29

	Five Years to FY29
Parramatta Council Dwelling Target	19,500
Cumulative Dwelling Supply	13,126
Dwelling Gap (+oversupply/-undersupply)	-6,374

## Planned and Projected Need for Dwellings in the Parramatta LGA FY25 - FY29



Source: Planning NSW (May 2024); UDP (June 2024); Urbis. Note: The State Government Housing targets incorporate both Planned and Projected growth in dwellings for the Parramatta LGA and are aimed at best meeting the dwelling need across NSW of 377,000 homes. The UDP dashboard indicates a significant portion of the planned supply is unlikely to be achieved.



